



Obtaining AASHTO Accreditation Following a CCRL On-Site Assessment

If you have not had a CCRL on-site assessment yet, **submit your request form** to CCRL. Carefully consider which standards you need to include in your lab's accreditation. Some labs find it beneficial to initially have smaller list of standards. Contact any agencies requiring your lab's accreditation to ensure you are assessed for the needed standards.

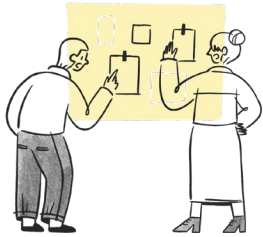
REGISTER

Register your lab on the AASHTO re:source website.



SIGN & SUBMIT

Sign and submit the CCRL-provided Release Form so your report can be sent to the AASHTO Accreditation Program.



VERIFY

Verify your lab conforms to the **Procedures Manual for the AASHTO Accreditation of Construction Materials Testing Laboratories** and your QMS meets AASHTO R 18.



PAY

Pay the AASHTO Accreditation Program **application fee**.

ENROLL

Enroll in any **AASHTO re:source** or **CCRL** proficiency sample programs **required** for the standards you would like to include in your accreditation



SUBMIT

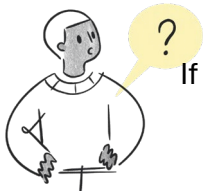
Via the **Accreditation Events**, submit your **Initial Accreditation Review Form** and supporting documents.



RESOLVE
Resolve all nonconformities noted in the CCRL report and address concerns noted by AASHTO Accreditation Program staff through the **Accreditation Events**. If you do not already have your own **Corrective Action Report Form**, feel free to use the template or design your own based on it.

PREREQUISITES

Some standards require your lab to meet the requirements of **prerequisite** standards before you can earn accreditation in the associated standard.



CONTACT

If you have any other questions, please **contact the AASHTO Accreditation Program**.

REQUEST

You may request an **AASHTO re:source On-Site Assessment** for standards that you wish to include in your lab's accreditation that CCRL does not cover. This can be done at any time, but accreditation cannot be granted until all nonconformities have been resolved.

